

Exports Worldwide



Scan to save as contact

ZAFIRA IMPEX

Mfg. & Visiting Office :

Plot No. 37A, Indira Road, Patel Estate,
Udyog Nagar, Near Jakat Naka,
Jamnagar-361004, (Gujarat), INDIA
Tel : +91-2882561670
Mo. : +91-901 (333) 7705, +91-956 (069) 0006

Branch Office :

Office At 829, West End Mall, District Centre,
Janak Puri, New Delhi-110058.
Mob. : +91-901 (333) 7705

Email

zafiraimpex@gmail.com
info@zafiraimpex.com

Website

www.zafiraimpex.com

Follow us @ :    

Product
CATALOGUE

"Quality means doing it right when
no one is looking." – Henry Ford

Quality First, Profit Next Our Products

Manufacturer & Exporters Of
Brass Components And Parts



ZAFIRA IMPEX

An ISO 9001:2015 Certified Co.



About Us...

ZAFIRA IMPEX is a manufacturer and Exporter of Ferrous and Non-Ferrous metal components, Parts & Hardware. We are specialized in the Manufacturing of all kinds of Brass Extrusion, Casting, Forging & Foundry Components and Parts and we have experience of more than 20 years in this industry. Our specialized team handle the entire supply chain activities. We are focused on Precision Engineering for various industries.

The company carries the vision to cater a variety of world class products. It believes in producing & supplying superior quality products with a sharp vision of market. It takes a lot of skill to design and manufacture in a competitive market but the company has a strong backbone of experienced and qualified team.

ZAFIRA IMPEX is technically advanced blend of multiple products and new standards in performance around the world, with partners, contributors, associates who are OEMs, Exporters, Importers, Traders, Indenters and shipping lines since started the operations in INDIA which is the fastest growing Economy as per the past scenario. In a matter of few years, we have come very far and established ourselves as one of the significant players in the sphere of activities specializing in providing various services and supplies, engaged in Imports, Exports etc.

We have a reputed, professionally managed business organization with sound business ethics and Policies, offering reliable delivery commitment on time with most competitive prices. We are uniquely positioned to lead in various new developments and marketing in the international markets and to provide unparalleled level of supports and services to the customers.

CUSTOMER FOCUS:

We are committed to providing our customers with comprehensive solutions that suits their needs. Our management philosophy is rooted in our aim of providing maximum customer satisfaction through continuous improvement in quality, distribution channels & all organizational processes. Innovative perspectives are adopted to encourage new ideas to avoid conservativeness. This has enabled us to grow into one of the leading exporters of Engineered Industrial supplies and other specialized products. Our dynamic, skilled and well experienced workforce continually contributes towards ensuring maximum customer satisfaction.

We thrive to be a part in the uplifting of Indian manufacturing sector to greatness amidst the "Make in India" campaign.



Customized Product Development/ Imprint options

At ZAFIRA, we offer custom product development services to cater to our client's specific requirements. From product raw material, designing, shape, size, finish to packing and shipping, we take care of all our client's needs as per their unique nature of requirements. All types of imprint options in our products are made available to our customers as per their needs.

Contract Manufacturing

Another specialized service provided by our company is contract manufacturing of products. Our good quality products have helped us to retain our old customers from a very long period of time. We have been maintaining a long-lasting relation with our clients as a result of which we also undergo contract manufacturing. Any product or set of products can be manufactured periodically as per contract for the same customers.

Private Labeling/ Logo Embossing

ZAFIRA can provide private labeling services, logo embossing services, embossing services and labeling services in India. Our production facility is well-equipped to undertake private labeling of the products as wished by the clients. Besides our own range of products, we also manufacture products, as per the specifications of the buyer and provide labeling services, logo embossing services. In other words, our products are also sold in the market with the logos of other companies. This is one specialized service that we provide to our clients.

"Quality is doing it right, when no one is looking"- Henry Ford

"Quality is never an accident. It is always the result of intelligent effort."- John Ruskin

TABLE OF CONTENTS

Air conditioning Parts	01
Automotive parts	02
Bush & Unions (Male/Female)	03
CNC Machine Parts	04
Decorative Parts	05
Earthing Components	06
Electrical Parts	07
Fasteners	10
Gas Parts	14
Inserts	15
Pneumatic & Hydraulic Fittings	17
Precision & Turned Parts	26
Sanitary Parts	27
Sheet Cutting Parts	27
Split Bolt Connectors	28
Dentistry Dowel Pins	28
Hardware (Hinges, Tower Bolts, Glass & Mirror Fittings etc.)	29
Components Index	31

2017.Zafira Impex. All Rights Reserved.

This Catalog and its contents are the sole property of Zafira Impex. No part of this catalog may be reproduced, copied or transmitted in any form or by any means, without the permission of Zafira impex. Any such act shall be prohibited by law.

AIR CONDITIONING PARTS

Clients can avail from us a wide range of **Air Conditioner Parts**, which are manufactured using latest and advanced technology. These parts are assured to deliver reliable performance and are highly resistant against corrosion. Owing to this, these parts find their wide usage in several air conditioning and refrigeration applications. Clients can avail these products as per their individual requirements at highly competitive prices.

Applications:-

- ★ Refrigeration systems
- ★ Heat pumps
- ★ Air conditioning systems

Any Kind Of Brass Air Conditioning Parts can be manufactured as per Customer's Specifications (Drawings & Samples)



AUTOMOTIVE PARTS (AVIATION, SHIPS, AUTOMOBILES ETC.)

We manufacture wide range of **Brass Auto Parts** that are known for high durability and corrosion resistant properties. Fabricated as per the industry standards, these are also provided in customized finishes to clients. Some more details about these Brass Auto Parts are mentioned below:



Material:-

- ★ Free Cutting Brass IS 319 type (i) or
- ★ Free Cutting Brass as per BS 249 type (i) or
- ★ High Grade Free Cutting Brass or
- ★ Any special Brass Material Composition as per customers requirement
- ★ Threads:- ISO Metric (MM Threads), BA, BSW threads.

Finish & Coating:-

- ★ Natural, Nickel Plated, Tin Plated or any coating as per customer specification.
- ★ Any kind of special brass auto parts can be developed and supplied exactly as per customer specifications.



BUSHES AND UNION (MALE-FEMALE)

We offer male female hex bushes with or without plating. All bushes are precisely threaded and machined to perfection. We offer reducing bushes with small internal threads

Sizes:-

- ★ As per customers specifications (Drawings & samples)

Threads:-

- ★ BSW, BSPT, UNC, UNF, BSP, NPT, NPS



Male Female Unions



CNC MACHINE PARTS



We Manufacture Brass CNC Parts as per Custom Specifications (Drawings and Samples)

Threads: All kind of threads like BSW BSF BSP UNC UNF BA ISO Metric

MM millimeter UNC NS available. (Roll threaded and cut threaded)

Design & Sizes: As Per Customer Specifications (On the basis of Drawings and samples)

Finish: Tin, Nickel, Electro polished, Buff, Natural Brass, Chrome plated etc

Customised Packaging : Box Or Bulk Available

DECORATIVE PARTS

We have gained expertise in delivering a quality range of **Brass Decorative Parts** to the patrons. These are extensively used as a decorative Fitting Parts in commercial offices, houses, hotels and restaurants. Our products are ensured of optimum quality as these are thoroughly examined by a quality controlling team, before the final dispatch.

Available Finishes:-

- ★ Polished Brass
- ★ Antique Brass, Steel Finish
- ★ Chrome Plated
- ★ Lacquered
- ★ Satin Lacquered



EARTHING COMPONENTS

Material:-

- ★ Free Cutting Brass IS 319 Type (I) or
- ★ Free Cutting Brass As Per BS 249 Type (I) or
- ★ High Grade Free Cutting Brass
- ★ Brass with Gold Plating

Threads:-

- ★ ISO metric (MM Threads)
- ★ BA Threads
- ★ BSW Threads
- ★ As per Customers Requirements

Features:-

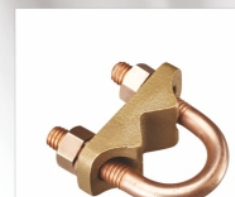
- ★ Corrosion Resistance
- ★ Dimensional Accuracy
- ★ Fine Polishing

Finish:-

- ★ Natural, Nickel Plated, Tin Plated or any coating as per customer specification.
- ★ We manufacture Brass Earthing Equipment as per customer requirements, drawings, samples or specifications.



Test Bonds



U-Bolt with forged clamps

U-BOLTS (FASTENER)

We offer Brass U-Bolts with or without plating.
All U-Bolts are precisely threaded and machined to perfection.

Sizes:-

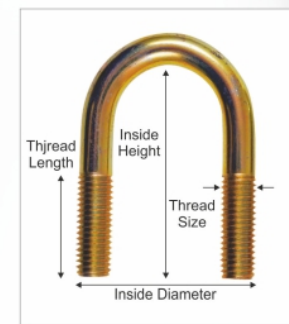
- ★ As per customers specifications (drawings & samples)

Threads:-

- ★ BSW, BSPT, UNC, UNF, BSP, NPT, NPS

Note:-

Nuts And Washers for All type of U-Bolts.
Material:- Stainless Steel, Iron, Copper as per customer Specifications can also be made.



FuseConnectors & Switch Gear Parts

Special Features:-

- ★ 16 amp to 100 amp or as per customer specification.
- ★ Long Service Life
- ★ Latest Techniques

Material:-

- ★ High Grade Free Cutting Brass, Brass as per IS 319 (Type 1), Brass as per BS (Type 1) or as per customer specifications.
- ★ Any special Brass Material Composition as per customer's requirement.

Finish And Coating:-

- ★ Natural, Nickel Plated, Tin Plated, Natural Brass or any coating as per customer specification.

Threads:-

- ★ ISO Metric, BA, BSW UNC, UNF, Any threads as per custom design.

Length / Size:-

- ★ As per Specifications or custom designs.

Application:-

- ★ HRC fuse connectors and HRC fuse links are used in Instrumentation, Telecommunications, and other Plastic Cases Assembly.

We have a strict quality control systems. We can make products in an accurate size / Tolerance ± 0.02 to 0.00 or as per customer's drawings and specifications. Our products is being supplied to various companies in India and abroad.

Any kind of brass electrical connectors can be developed and supplied exactly as per customer specifications.

We Manufacture Fuse Connectors and switch gear parts as per Custom Specifications(Drawing and Samples)



Neutral Links / Terminal Blocks & Bars

Material:-

- ★ Free Cutting Brass CuZn39Pb3 or BS 249 Type or High Grade
- ★ Brass - BS 2872 CZ 112.
- ★ Copper - BS 2872 C 101, 102.
- ★ Provide Special alloy as per customer's requirement

Sizes:-

- ★ Any Size from 2 ways to 50 ways from 72mm to 1.5 meter or as per custom requirement can be made available.
- ★ Screws are available with option of Brass or Steel material with designs from simple Cheese slotted head, Phillips Head, Phillips combination head etc. with simple roll thread or special lock thread facility. All sizes can be developed exclusively as per Custom design & specification.

Finish And Coating:-

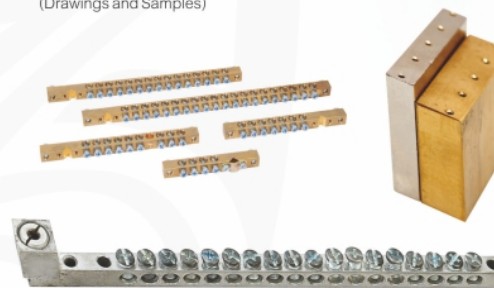
- ★ Natural, Nickel Plated, Tin Plated, Natural Brass or any coating as per customer specification.

We offer brass neutral link and terminal block for all types of panel board, switch gears.

We manufacture and export Brass neutral links Brass Neutral bars, Brass Terminal Blocks and Brass Earth Bars, Brass Neutral Bars with special tin plated or nickel plated smooth finish.

Neutral Links / Bars & Terminal blocks are used as an accessory in Panel Boards & Electrical Board in Industries like Electrical, Electronics & Telecommunications. It is considered as a backbone in Building Circuit Protections such as MCB, Switchgears, Circuit breaker, RCD etc. Panel Board (Distribution Board) comprises of copper bus bars, brass neutral links, and earth links to facilitate effective distribution of current. It incorporates safety devices such as MCBs, ELCBs and Isolators, which serves to protect the installation. Brass Neutral Link/Bar & Terminals are very crucial components in every application of its nature. It plays major role in Isolation of Electric equipment & clearing faulty downstream, by means of Switchgear and preventing short circuit & protecting electric circuit from damage caused by overload, in the form of Circuit breaker & so on. Because we understand this criticality, we are committed to deliver high class premium quality Brass Neutrals Links & Terminals as per International Standards & Specifications, at very competitive price.

We Manufacture Brass Neutral Links as per Custom Specifications (Drawings and Samples)



Brass Electrical Plugins

Special Features of Brass Electrical Plug Pins, Brass Socket Pins:-

- ★ Available as per customer's drawing and specifications.

Length / Size:-

- ★ Any size as per custom design or requirement

Threads:-

- ★ ISO Metric (MM Threads)
- ★ BA, BSW (Inches), UNC, UNF or
- ★ Any as per custom design.

Material:-

- ★ Free Cutting Brass IS 319 Type (I) or BS 249 Type (I) or High Grade
- ★ Any Special Brass Material Composition as per customers requirement

Finish And Coating:-

- ★ Natural, Nickel Plated, Tin Plated brass electrical plug pins and brass socket pins or any coating as per customer specification.
- ★ Any kind of brass electrical plug pins and brass socket pins can be developed and supplied exactly as per customer specifications.



Anchor Fasteners (also known as cheville latorn/ messing dubel/ metal plug)

Out Products List Include:-

- ★ Sleeve Brass Anchor
- ★ Expansion Brass Anchor
- ★ Pool Anchor
- ★ Drop in Anchor
- ★ Sizes available as per your drawing/sample.
- ★ Pool Anchors are generally used in Net of Swimming Pool

Material:-

- ★ IS 319 Brass Free Cutting
- ★ As per BS-249 Free cutting Brass Material
- ★ High Grade Free Cutting
- ★ Any Special Brass Material Composition on Request

Plating:-

- ★ Natural, Nickel Plated, Silver Plated, Tin Plated, Copper Plated

Threads:-

- ★ All Brass Anchor Fasteners are with screw threads like BSW BSF BSP UNC UNF BA ISO Metric MM millimeter UNS NS available. (Roll threaded and cut threaded)

Standard Dimensions:-

- ★ From M4 to M20 or As per Customer Specifications.

Measurements	Thread Size (mm)	Outer Dia. (mm)	Length (mm)
M4	4 mm	5 mm	16 mm
M5	5 mm	6.5 mm	20 mm
M6	6 mm	8 mm	23 mm
M8	8 mm	10 mm	27 mm
M10	10 mm	12 mm	32 mm
M12	12 mm	15 mm	38 mm
M14	14 mm	18 mm	42 mm
M16	16 mm	20 mm	43 mm

NOTE:- Dimension can be changed as per customer specifications

Available Finish Or Plating (As Per Customer Specifications)

- ★ Tin, Nickel, Electro plating, Buffing, Natural Brass, Chrome plated etc.

Advantages:-

- ★ It has a larger bearing area and acts as a socket.
- ★ Suitable for solid brick, Light Concrete, Hollow Core concrete, Panels and timber.
- ★ The body is knurled for improved Performance.
- ★ Fixture can be removed and replaced.
- ★ Corrosion resistant anchor, therefore also suitable for outdoor use.

Installation:-

- ★ Drill a hole as per the external diameter of the Brass Anchor.
- ★ Hammer the Brass Anchor into the hole.
- ★ Take a Required bolt for screwing.
- ★ Fix it with suitable spanner.

Application:-

- ★ Used for all Medium and Heavy Duty Fixing in Building Industry.
- ★ For Eg : Electrical, Sanitary Installation Works, Air - Conditioning, Mounting of suspended Ceilings, Wall Mountings, Heavy Systems Etc.



BRASS FASTENERS

Brass Bolts

Out Products Include:-

- ★ Brass flush bolts
 - ★ Brass door bolts
 - ★ Nut bolts
 - ★ Hex nuts
 - ★ Brass carriage bolts
 - ★ Square nuts panel & welding.
- Cold forged and bar turned fasteners are also available.



Special Brass Screws:-

- ★ We shall be pleased to develop Non-Standard bolts, nuts, screws, studs, fixings, wood screws, machine screws fasteners as per specific requirements.

Material:-

- ★ Brass to BS 2874 / 2872

Finish:-

- ★ Brass natural, Electro-Tinned, Nickel etc.

Threads Types:-

- ★ ISO Metric, BSW, BA, BSF, UNC, UNF UNEF etc.

Threads:-

- ★ 2mm, 3mm, 4mm, 5mm, 6mm, 8mm, 10mm, 12mm, 16mm, 20mm, 25mm, 32mm
- 1/8", 5/32", 3/16", 1/4", 5/16", 3/8", 1/2", 5/8", 3/4", 1", 1 1/8", 1 1/4", 1 1/2", 1 3/4", 2"



Hex-Nuts

We are manufacturer of high tensile Brass Nuts. Our specialized range of these nut bolts can be used for attaching thread fastener. The products can be customized as per the demand of our customers.



BRASS FASTENERS

Brass Screws

Out Products List Include:-

- ★ Brass Screws Cheese head slotted grub screws
- ★ Counter sunk head slotted screws
- ★ Round head slotted screws
- ★ Slotted grub screws
- ★ Raised head slotted screws
- ★ Philips head screws
- ★ Brass machine Screws
- ★ Wood screws Pan head slotted screws
- ★ Combination head screws
- ★ Socket head screws
- ★ Terminals screws for connector block
- ★ Knurled slotted screws (thumb screws)

We shall be pleased to develop all types of Brass Fasteners & Brass Screws as per specific requirements.

Material:-

- ★ Brass to BS 2874 / 2872

Threads:-

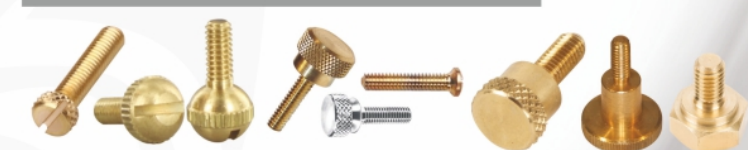
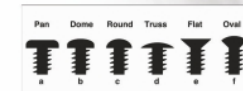
- ★ ISO - Metric, UNC, UNF, BSF, BSW, BA, UNEF etc.

Size:-

- ★ 2mm 3mm 4mm 5mm 6mm 8mm 10mm 12mm 16mm 20mm 25mm 32mm
- 1/8" 5/32" 3/16" 1/4" 5/16" 3/8" 1/2" 5/8" 3/4" 1" 1 1/8" 1 1/4" 1 1/2" 1 3/4" 2"

Finish And Coating:-

- ★ Brass Fasteners are Brass natural, Electro-Tinned, Nickel etc.



BRASS FASTENERS

Metric Nuts

We are manufacturers and exporters of Brass Metric and Hex nuts.

Threads:-

- ★ All screw threads like BSW BSF BSP UNC UNF BA ISO Metric MM millimetre UNC NS available. (Roll threaded and cut threaded)

Sizes:-

- ★ 0BA, 2BA, 4BA 6BA 8BA 10BA 12 BA 14BA 16BA, 1mm, 1.5mm, 1.6mm, 2mm, 2.5mm, 3mm, 3.5mm, 4mm, 6mm, 8mm, 10mm, 16mm, 18mm, 20mm, 22mm, 24mm, 1/8", 5/32", 3/16", 1/4", 5/16", 3/8", 1/2", 5/8", 3/4", 1"

Finish:-

- ★ Tin, Nickel, Electro polished, Buff, Natural Brass, Chrome plated etc.



Pillars / Standoffs

Our product designing and developing capabilities enable us to manufacture these Brass Pillars in varied designs. These can be manufactured forging or any other process as per the specification laid by our customers.

Finish:-

- ★ As per customer's requirement.

Material:-

- ★ Material: Brass (CZ 121).
- ★ Free cutting brass as per BS 249 type (i) or
- ★ High grade free cutting brass

Threads:-

- ★ ISO Metric (MM Threads)
- ★ BA Threads
- ★ BSW Threads (inches)
- ★ UNC & UNF Threads

We manufacture Brass Pillars as per customer's requirements, drawings, samples or specifications.



BRASS FASTENERS

Brass Washers

Standard Specification:-

- ★ IS 2016-1967 Type A & Type B

Range:-

- ★ 2 mm to 50 mm and as per Requirement

Material:-

- ★ M.S., E.N.9, EN-42J, Copper, Brass, Any kind of Plain Washers can be developed and supplied exactly as per customer specifications in drawing.

We Manufacture Washers as per Custom Specifications (Drawing and Samples)



GAS PARTS

Enhancing the efficacy of the Brass gas Parts etc., our Brass Gas Parts are precisely designed by the engineers. Brass Gas Meter Parts offered by us are available in various dimensions and sizes to match the different needs of the clients. Use of superior quality brass assures high durability and strength of the Brass Gas Parts. Dimensionally accurate, our Brass Gas Parts are apt for any model of Gas Meter (G-1.6, G-6, G-10, G-25 etc).

Threads:-

- ★ Brass, Gun Metal, Any special Brass Material Composition as per customer requirement.

Material:-

- ★ ISO Metric, BSP, BSPT, NPT, NPTF, BSW, UNC, UNF etc. as per availability.

Finish:-

- ★ Brass as natural

Length/Size:-

- ★ As per Company's Drawing & Requirement

Available in many combinations of sizes, multi-step reductions, and shapes other than above mentioned. Pressure ratings up to 1,000 PSI.



Types Of Brass Inserts:-

- ★ Brass Molding Inserts, Brass Helical Knurled Inserts, Brass Tappex Type Inserts, Brass Straight Knurled Inserts, Brass Cross Knurled Inserts., Hexagonal Inserts, Wood Inserts, Square Inserts, Round Knurled Inserts, Brass BSP / NPT Threaded Inserts, Brass Self Tapping Inserts, Brass Press Lock Type Inserts.

We offer Inserts for UPVC, CPVC, molding of thermoplastics, Formed Plastics, LDPE, HDPE Rubbers, ABS, Poly-Carbonates, Bakelite's, PP, Acrylic, etc.

Size:-

- ★ 2mm, 2.5mm, 3mm, 4mm, 5mm, 6mm, 8mm, 10mm, 12mm, 16mm, 20mm
1/8", 3/4", 5/32", 3/16", 1/4", 5/16", 3/8", 1/2", 3/4", 1"

Material:-

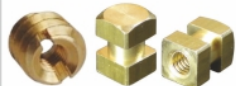
- ★ IS 319 Type (I), BS 249 Type (I) Free Cutting Brass, High Grade Free Cutting, Any Special Brass Material Composition on Request

Finish:-

- ★ Natural, Tin Plated, Nickel Plated or any coating as per customer's requirement

Threads:-

- ★ ISO Metric (MM), UNC, UNF Threads, BA, BSW Threads (Inches)
We can manufacture all types of Inserts as per Customer's Specifications (Drawings and Samples)

**Brass Inserts For CPVC & PPR Pipe Fittings****Brass Female Inserts for CPVC Fittings:-**

Fitted with Stainless Steel Ferrule & EPDM Rubber Ring
Available: Cross Knurling & Straight Knurling

Sizes:- 1/2", 3/4", 1", 1.1/2", 1.1/4", 2"

Threads:- BSP & BSPT (Parallel & Taper Threads)
Designed & developed as per customer's requirement.

Brass Male Inserts for CPVC Fittings:-

Fitted with Stainless Steel Ferrule & EPDM Rubber Ring
Available: Cross Knurling & Straight Knurling

Sizes:- 1/2", 3/4", 1", 1.1/2", 1.1/4", 2"

Threads:- BSP & BSPT (Parallel & Taper Threads)
Designed & developed as per customer's requirement.

Brass Male Insert/Adaptor for CPVC Fittings

Available:- Hex / Flower & Round Head

Sizes:- 1/2" to 2"

Threads:- BSP & BSPT (Parallel & Taper Threads)
Designed & developed as per customer's requirement.

Brass Female Inserts For PPR Fitting

Available in Brass / Nickel & Chrome Finish

Size:- 1/2" to 2"

Threads:- BSP & BSPT (Parallel & Taper Threads), NPT
Designed & developed as per customer's requirement.

Brass Male Inserts For PPR Fittings

Available in Brass / Nickel & Chrome Finish

Size:- 1/2" to 2"

Threads:- BSP & BSPT (Parallel & Taper Threads), NPT
Designed & developed as per customer's requirement.

- ★ Moulding inserts, molding turned parts are also available as per customer design and samples plastic moulding PVC & CPVC injection moulding.

Any Kind of Brass Moulding Fittings can be developed
as per customers Specifications



Adapters and Reducers

We are expertise has enabled us to come up with Brass Adapters & Reducers. Clients can avail these products in varied sizes, shapes and dimensions as per their requirements. They are precise in nature and strong in material which rarely may distinct due to factors beyond control.

Features:- Ease of install, Accurate dimensions, Corrosion resistance

Size:- 20 mm to 63 mm & 3/4" to 2" All available in Male & Female Thread

Material:- Brass

**COMPRESSION FITTING****Compression Adaptors**

Threads:- BSP, UNF, BSPT & NPT

Material Used:- Brass (BS-249).

Available in many combinations of sizes, multi-step reductions, and shapes other than displayed product.

We Manufacture Compression Adaptors as per Custom Specifications (Drawings and Samples)

**Compression Connectors**

Threads:- BSP, UNF, BSPT & NPT

Material:- Brass (BS-249).

Available in many combinations of sizes, multi-step reductions, and shapes other than displayed product.

We Manufacture Compression Connectors as per Custom Specifications (Drawings and Samples)

**Compression Elbows**

Threads:- BSP, UNF, BSPT & NPT

Material:- Brass (BS-249)

Available in many combinations of sizes, multi-step reductions, and shapes other than displayed product.

We Manufacture Compression Elbows as per Custom Specifications (Drawings and Samples)

**Compression Nuts**

Description:- No flaring or soldering necessary.

Range is very wide. Easy to assemble. Economical.

Material:- Copper, brass.

Size:- As per material compositions desired by the customer.

We Manufacture Compression Nuts as per Custom Specifications (Drawings and Samples)

**Compression Parts**

Material:- Brass - BS 2872 CZ 112.

Copper:- BS 2872 C 101, 102.

Finish:- Natural, Electro-Tin, Chrome or Nickel plated.

Sizes:- As per specifications

**Compression Sleeves**

Material Used:- Brass BS-249, IS-319, IS 320, CZ121, C-3604, CDA-360

Any special brass material composition as per customer's requirements

Size:- Any size can provide as per customer's requirements

We Manufacture Compression Sleeves as per Custom Specifications (Drawings and Samples)

**Compression Tees**

Threads:- BSP, UNF, BSPT & NPT

Material:- Brass (BS-249).

Available in many combinations of sizes, multi-step reductions, and shapes other than displayed product.

We Manufacture Compression Tees as per Custom Specifications (Drawings and Samples)

**Compression Unions**

Threads:- BSP, UNF, BSPT & NPT

Material Used:- Brass (BS-249).

Available in many combinations of sizes, multi-step reductions, and shapes other than displayed product.

We Manufacture Compression Unions as per Custom Specifications (Drawings and Samples)

**Cylinder Adaptor**

Material:- Brass, Copper

Finish & Coating:- Natural Finish, Nickel Plated, Tin Plated.

Threads:- UNF & NPT

Size:- As per material compositions desired by the customer.

We Manufacture Cylinder Adaptor as per Custom Specifications (Drawings and Samples)

**Female Coupling**

Coupling - Female. Joins Male Pipe Thread to Female Flare Thread.

Material:- Brass, Copper.

Finish & Coating:- Natural Finish, Nickel Plated, Tin Plated.

Threads:- UNF & NPT

Size:- 1/4" x 1/4", 1/4" x 3/8", 3/8" x 3/8", 3/8" x 1/2", 1/2" x 3/4"

As per material compositions desired by the customer.

We Manufacture Female Coupling as per Custom Specifications (Drawings and Samples)



FLARE FITTINGS

Flare Caps

Material:- Brass (BS-249)

Finish & Coating:- Natural Finish, Nickel Plated, Tin Plated.

Threads:- UNF & NPT

Available in many combinations of sizes, multi-step reductions, and shapes other than displayed product.

We Manufacture Brass Flare Caps as per Custom Specifications (Drawings and Samples)



Flare 45 Degree Elbow

We are manufacturers of high quality 45 Degree Flare Elbow. These are manufactured with high density materials using latest mechanism. These are designed in various combinations, sizes and dimension as per the requisites of our clients.

Material:- Brass (BS-249)

Finish & Coating:- Natural Finish, Nickel Plated, Tin Plated.

Threads:- UNF & NPT

Size:- 1/4" X 1/8" NPT to 1/2" x 1/2" NPT

Available in many combinations of sizes, multi-step reductions, and shapes other than displayed product. We Manufacture 45 Degree Flare Elbow as per Custom Specifications (Drawings and Samples)



Flare Unions

Material:- Brass (BS-249)

Finish & Coating:- Natural Finish, Nickel Plated, Tin Plated.

Threads:- UNF & NPT

Size:- As per material compositions desired by the customer. Available in many combinations of sizes, multi-step reductions, and shapes other than displayed product.

We Manufacture Brass Flare Unions as per Custom Specifications (Drawings and Samples)



Flare Long Nut

We provide huge collection of Flare Long Nut, which is able to cater the varied requisites of industries. Our team of professionals stringently checks entire process of development to ensure optimum quality. Our range is widely acknowledged for its dimensional accuracy, sturdy construction and longer working life.

Material:- Brass (BS-249)

Finish & Coating:- Natural Finish, Nickel Plated, Tin Plated.

Threads:- UNF & NPT

Size:- 1/8" to 3/4"

Available in many combinations of sizes, multi-step reductions, and shapes other than displayed product.

We Manufacture Brass Flare Long Nut as per Custom Specifications (Drawings and Samples)



Flare Nut - Long Neck

Material:- Brass, Copper

Finish & Coating:- Natural Finish, Nickel Plated, Tin Plated.

Threads:- UNF & NPT

Size:- As per material compositions desired by the customer.

We Manufacture Flare Nut - Long Neck as per Custom Specifications (Drawings and Samples)



Flare Male Cross

Flare Male Cross are available in many combinations of sizes, multi-step reductions, and shapes.

Material:- Brass, Copper,

Finish & Coating:- Natural Finish, Nickel Plated, Tin Plated.

Threads:- UNF & NPT

Size:- 1/4", 3/8", 1/2"

As per material compositions desired by the customer.

We Manufacture Brass Flare Male Cross as per Custom Specifications (Drawings and Samples)



Flare Male Half Elbow

Flare Male Half Elbow are available in many combinations of sizes, multi-step reductions, and shapes.

Material:- Brass, Copper.

Finish & Coating:- Natural Finish, Nickel Plated, Tin Plated.

Threads:- UNF & NPT

Size:- As per material compositions desired by the customer.

We Manufacture Flare Male Half Elbow as per Custom Specifications (Drawings and Samples)



Flare Male Half Tee

Flare Male Half Tee are available in many combinations of sizes, multi-step reductions, and shapes.

Material:- Brass, Copper.

Finish & Coating:- Natural Finish, Nickel Plated, Tin Plated.

Threads:- UNF & NPT

Size:- As per material compositions desired by the customer.

We Manufacture Flare Male Half Tee as per Custom Specifications (Drawings and Samples)



Flare Nuts

Material:- Brass (BS-249)

Finish & Coating:- Natural Finish, Nickel Plated, Tin Plated.

Threads:- UNF & NPT

Size:- As per material compositions desired by the customer. Available in many combinations of sizes, multi-step reductions, and shapes other than displayed product.

We Manufacture Brass Flare Nuts as per Custom Specifications (Drawings and Samples)



Flare Plugs

Material:- Brass (BS-249)

Finish & Coating:- Natural Finish, Nickel Plated, Tin Plated.

Threads:- UNF & NPT

Available in many combinations of sizes, multi-step reductions, and shapes other than displayed product.

We Manufacture Brass Flare Plugs as per Custom Specifications (Drawings and Samples)



Flare Reducing Elbow

Flare Reducing Elbow are available in many combinations of sizes, multi-step reductions, and shapes.

Material:- Brass, Copper.

Finish & Coating:- Natural Finish, Nickel Plated, Tin Plated.

Threads:- UNF & NPT

Size:- As per material compositions desired by the customer.

We Manufacture Flare Reducing Elbow as per Custom Specifications (Drawings and Samples)

**Flare Reducing Union**

Flare Reducing Union are available in many combinations of sizes, multi-step reductions, and shapes.

Material:- Brass, Copper.

Finish & Coating:- Natural Finish, Nickel Plated, Tin Plated.

Threads:- UNF & NPT

Size:- As per material compositions desired by the customer.

We Manufacture Flare Reducing Union as per Custom Specifications (Drawings and Samples)

**Flare Short Nuts**

Brass Flare Short Nut are available in various types, series, thickness and sizes. Our range is perfect for connections of pipes. Our exclusive collection enhances the overall performance of transfer system and other similar works.

Material:- Brass (BS-249)

Finish & Coating:- Natural Finish, Nickel Plated, Tin Plated.

Threads:- UNF & NPT

Size:- 1/8" to 3/4"

Available in many combinations of sizes, multi-step reductions, and shapes other than displayed product.

We Manufacture Brass Flare Short Nuts as per Custom Specifications (Drawings and Samples)

**Flare Swivel Nuts**

Material:- Brass (BS-249)

Finish & Coating:- Natural Finish, Nickel Plated, Tin Plated.

Threads:- UNF & NPT

Size:- 1/4" x 1/4", 5/16" x 5/16", 3/8" x 3/8", 3/8 x 1/4", 1/2" x 1/2",
1/2" x 3/8", 5/8" x 5/8", 5/8" x 1/2", 3/4" x 3/4"

Available in many combinations of sizes, multi-step reductions, and shapes other than displayed product.

We Manufacture Brass Flare Swivel Nuts as per Custom Specifications (Drawings and Samples)

**Flare Tees**

No flaring or soldering necessary. Range is very wide. Easy to assemble. Economical.

Material:- Copper, brass.

Finish & Coating:- Natural Finish, Nickel Plated, Tin Plated.

Threads:- UNF & NPT

Size:- As per material compositions desired by the customer.

We Manufacture Brass Flare Tees as per Custom Specifications (Drawings and Samples)

**Flare to Solder Union**

Material:- Brass, Copper,

Finish & Coating:- Natural Finish, Nickel Plated, Tin Plated.

Threads:- UNF & NPT

Size:-

Flare	Size	Solder	A	Size	Hex
1/4	1/4	11/16	7/16		
1/4	3/8	11/16	1/2		
3/8	3/8	7/8	5/8		
3/8	1/2	7/8	5/8		
3/8	5/8	7/8	3/4		
1/2	1/2	11/16	3/4		
1/2	5/8	11/16	3/4		
5/8	1/2	11/4	7/8		
5/8	5/8	11/4	7/8		
5/8	3/4	11/4	7/8		
3/4	3/4	17/16	11/16		



We Manufacture Flare to Solder Union as per Custom Specifications (Drawings and Samples)

Flare Condenser Union

Flare Condenser union are available in many combinations of sizes, multi-step reductions, and shapes.

Material:- Brass, Copper,

Finish & Coating:- Natural Finish, Nickel Plated, Tin Plated.

Threads:- UNF & NPT

Size:- 1/4", 3/8", 1/2", 5/8"

As per material compositions desired by the customer.

We Manufacture Flare Condenser Union as per Custom Specifications (Drawings and Samples)

**Flare Inverted Tee**

We are manufacturer of Flare Inverted Tee, which are designed from high grade raw material and are suitable for various industrial applications. The Flare Inverted Tee supplied by us is available in many combinations of sizes, multi-step reductions, and shapes other than above mentioned.

Material:- Brass, Copper/

Finish & Coating:- Natural Finish, Nickel Plated, Tin Plated.

Threads:- UNF & NPT

Size:- 1/8", 3/16", 1/4", 5/16", 3/8"

Available in many combinations of sizes, multi-step reductions, and shapes other than displayed product.

We Manufacture Flare Inverted Tee as per Custom Specifications (Drawings and Samples)

**FORGED FITTINGS****Forged Female Cross**

We are manufacturer and exporters of premium quality Forged Female Cross, which are designed from high grade raw material and are suitable for various industrial applications. The Forged Female Cross are available in many combinations of sizes, multi-step reductions, and shapes.

Material:- Brass, Copper.

Size:- 1/8", 1/4", 3/8", 1/2", 3/4"

As per material compositions desired by the customer.

We Manufacture Forged Female Cross as per Custom Specifications (Drawings and Samples)



Forged Female Street Run Tee

We are manufacturer and exporters of premium quality Forged Female Street Run Tee, which are designed from high grade raw material and are suitable for various industrial applications. The Forged Female Street Run Tee are available in many combinations of sizes, multi-step reductions, and shapes.

Material:- Brass, Copper.

Size:- 1/8", 1/4", 3/8", 1/2", 3/4"

As per material compositions desired by the customer.

We Manufacture Forged Female Street Run Tee as per Custom Specifications (Drawings and Samples)

**Forged Female Tee**

We are manufacturer and exporters of premium quality Forged Female Tee, which are designed from high grade raw material and are suitable for various industrial applications. The Forged Female Tee are available in many combinations of sizes, multi-step reductions, and shapes.

Material:- Brass, Copper.

Size:- 1/8", 1/4", 3/8", 1/2", 3/4"

As per material compositions desired by the customer.

We Manufacture Forged Female Tee as per Custom Specifications (Drawings and Samples)

**Forged Nuts**

We are manufacturer and exporters of premium quality Forged Nut, which are designed from high grade raw material and are suitable for various industrial applications. The Forged Nut are available in many combinations of sizes, multi-step reductions, and shapes.

Material:- Brass, Copper.

Size:- 3/16" to 7/8"

As per material compositions desired by the customer.

We Manufacture Brass Forged Nuts as per Custom Specifications (Drawings and Samples)

**Forged Street Elbow**

We are manufacturer and exporters of premium quality Forged Street M/F Elbow, which are designed from high grade raw material and are suitable for various industrial applications. The Forged Street M/F Elbow are available in many combinations of sizes, multi-step reductions, and shapes.

Material:- Brass, Copper.

Size:- 1/8", 1/4", 3/8", 1/2", 3/4"

As per material compositions desired by the customer.

We Manufacture Forged Street Elbow as per Custom Specifications (Drawings and Samples)

**Forged Female Elbow**

We are manufacturer and exporters of premium quality Forged Female Elbow, which are designed from high grade raw material and are suitable for various industrial applications. The Forged Female Elbow are available in many combinations of sizes, multi-step reductions, and shapes.

Material:- Brass, Copper.

Size:- 1/8", 1/4", 3/8", 1/2", 3/4"

As per material compositions desired by the customer.

**OTHER FITTINGS****90 Degree Elbow**

High quality 90 Degree Flare Elbow are manufactured with high density materials using latest mechanism. These are designed in various combinations, sizes and dimension as per the requisites of our clients.

Material:- Brass (BS-249)

Finish & Coating:- Natural Finish, Nickel Plated, Tin Plated.

Threads:- UNF & NPT

Size:- 1/4" X 1/8" NPT to 1/2" x 1/2" NPT

Available in many combinations of sizes, multi-step reductions, and shapes other than above mentioned. We Manufacture 90 Degree Female Elbow as per Custom Specifications (Drawings and Samples)

**Four Way Male Connectors**

Threads:- BSP, UNF, BSPT & NPT

1/8"	1/8"	3/8"	1/4"	3/4"	3/8"
1/8"	1/4"	3/8"	3/8"	3/4"	1/2"
1/8"	3/8"	3/8"	1/2"	3/4"	3/4"
1/4"	1/8"	1/2"	1/4"	1"	3/4"
1/4"	1/4"	1/2"	3/8"	1"	1"
1/4"	3/8"	1/2"	1/2"		

As per material compositions desired by the customer.

We Manufacture Four Way male connectors as per Custom Specifications (Drawings and Samples)

**Hex Plug**

Threads:- NPT

Material:- Brass

Size:- 3/8"

As per material compositions desired by the customer.

We Manufacture Brass Hex Plug as per Custom Specifications (Drawings and Samples)

**Hose Barb Fittings**

Manufacturer and exporter brass Hose Barb Fittings for pipe, garden hose, gas stove, house barb and many more.

Elbow, Tee, Wash nipple, Female to female, Reducers

Material:-

Free Cutting Brass IS 319 Type I or BS 249 Type I.

Any Special Non Ferrous Material Grade.

Thread:-

ISO Metric (MM Threads), BA, BSW (Inches), UNC, UNF, Any as per customize Specification

Size:-

Apart from standard, We develop customize parts as per technical drawing or other relevant data.

Finish:- Natural, Nickel Plated, Silver Plated, Tin Plated
As per customer Specification



Inserts For Soft Tubing

Nut Size (OD):- 1/4", 5/16", 3/8", 1/2", 5/8"

Material:- Brass, Copper

Any kind of Male Branch Tee Compression Fittings can be developed and supplied exactly as per customer's specifications.

We Manufacture Brass Inserts for Soft Tubing as per Custom Specifications (Drawings and Samples)

**Male Female Elbow**

Presenting a class apart range of Brass Male Female Elbow. Prepared using finest of brass and polished properly using world class machines our range of elbows are in high demand. Below are the ranges in which Brass Male Female Elbow is produced.

Length / Size: 1/8", 1/4", 3/8", 1/2", 3/4", 1", 3/4"

**Nut & Nipple**

Material:- Brass - BS 2872 CZ 112.

Copper - BS 2872 C 101, 102.

Finish:- Natural, Electro-Tin, Chrome or Nickel plated.

Sizes:- As per specifications

We Manufacture Brass Nut & Nipple as per Custom Specifications (Drawings and Samples)

**Olive Elbow Assembly**

Length / Size:-

1/8" 3/16" 1/4" 5/16" 3/8" 1/2" 5/8" 3/4" 1"

4mm 5mm 6mm 8mm 10mm 12mm 15mm 16mm 20mm

We Manufacture Olive Elbow Assembly as per Custom Specifications (Drawings and Samples)

**Olive Nuts**

Threads:- BSP

Material:- Copper, brass.

Size:- 1/8", 3/16", 1/4", 1/4" Heavy, 5/16", 3/8", 1/2", 5/8", 3/4", 1",

4mm, 5mm, 6mm, 8mm, 10mm, 12mm, 15mm, 16mm, 20mm, 25mm

We Manufacture Brass Olive Nuts as per Custom Specifications (Drawings and Samples)

**Olive Tee Male**

Brass male tee is widely admired by our clients for its excellent rust resistance capacity and longer working life. The tee are threaded nicely so that it can be fitted easily. These are made from the finest quality raw material are the most reasonable rates.

Threads:- BSP, UNF, BSPT & NPT

Material:- Brass (BS-249).

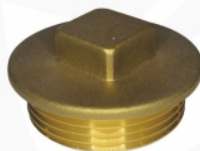
We Manufacture Brass Olive Tee Male as per Custom Specifications (Drawings and Samples)

**BSP Brass Flanged Plug**

Brass flanged plug is widely admired by our clients for its excellent rust resistance capacity and longer working life. The tee are threaded nicely so that it can be fitted easily. These are made from the finest quality raw material are the most reasonable rates.

Threads:- BSP, UNF, BSPT & NPT

Material:- Brass (BS-249).



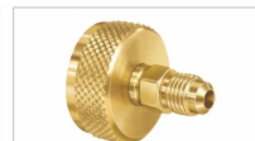
We specialize in manufacturing Precision Turned Machined Components, Precision Brass Turned Components, CNC Precision Turned Components that finds application in plastic, engineering, automobile, electrical and electronic industry etc.

Apart from turning, the live tooling facility with full C-axis capability enables us to produce complex turned/milled parts in one setup.

The complete range of Precision Turned machined components can be custom designed in variety of dimensional specification as per the requirement of the clients.



Precision Hose Barb Fitting



Knurling Cylinder Adaptor



Precision Busing



Adjuster Bushings



Brass Nipple

We can manufacture all Brass Precision & turned Parts as per Custom Specifications (Drawing and Samples)



SANITARY FITTINGS

We offer high quality range of **Brass Sanitary Fittings**. These Brass Sanitary Fittings are fabricated by using premium quality raw material.

Material:-

- ★ IS 319 Type (I), BS 249 Type (I) Free Cutting Brass, High Grade Free Cutting.
- Any Special Brass Material Composition on Request

Finish And Coating:-

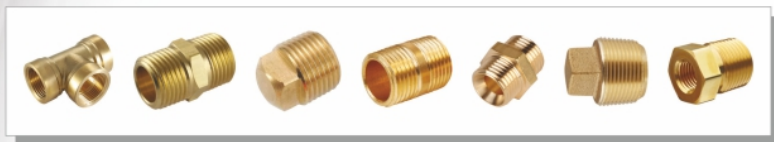
- ★ Natural, Nickel Plated, Chrome plating.

Threads:-

- ★ ISO Metric (MM Threads)
- ★ BA Threads
- ★ BSW Threads (inches)
- ★ UNC & UNF Threads Any Threads as per custom design.

We manufacture **Brass Sanitary Fittings** as per client's requirements, drawings, samples or specifications.

Chrome Plating



SHEET CUTTING PARTS

Sheet cutting and pressed parts can be made as per custom design and specification

Material:-

- ★ Brass Sheet Half Hard as per IS 410 or
- ★ 63/37 Half Hard Brass Sheet.

Finish And Coating:-

- ★ Natural, Nickel Plated, Tin Plated brass sheet cutting parts, brass pressed parts or any coating as per customer specification.
- ★ Any kind of brass Sheet Cutting parts can be developed and supplied exactly as per customer specifications (Drawings & Samples).



SPLIT BOLT CONNECTORS

We are manufacturing, Supplying and Exporting Brass Products. We provide a wide range of **Brass Split Bolt Connectors** to our customers, which is manufactured using a combination of premium grade raw material and the latest technology.

Features:-

- ★ Fine finish
- ★ Sturdy Construction
- ★ Highly resistant

Specifications:-

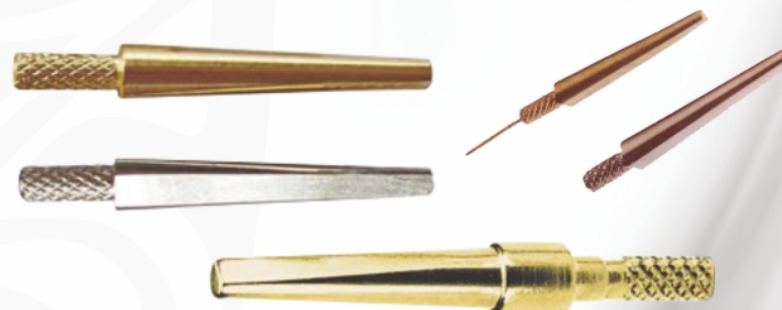
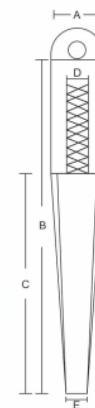
- ★ Material: High Tensile Brass
- ★ Finish: Natural Brass / Electro Tinned
- ★ Sizes: 10 mm² to 500 mm²
- ★ Shape: Round and hexagonal shape



Any kind of **Brass Split Bolt Connectors** can be manufactured as per 'Drawings' or 'Sample' provided by the customer. **Brass Split Bolt Connectors** are available in various finishes as per requirement.

CLINICAL DENTAL COMPONENT (Brass Dowel Pins)

Model	Size	A	B	E	COLOR
ZI-001	3.0	22	1.6	Silver	
ZI-002	3.0	22	1.6	Gold	
ZI-003	3.0	21.5	1.6	Silver	
ZI-004	3.0	20	1.6	Silver	
ZI-005	3.2	22	1.54	Gold	
ZI-006	3.0	22	2	Silver	
ZI-007	2.2	22	1.1	Silver	
ZI-008	3.2	21	1.6	Gold	



Material : Brass & Stainless Steel Hardware



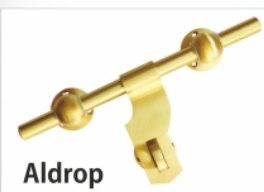
Hinges



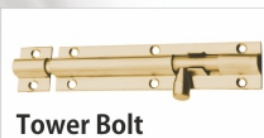
Glass Fittings



Window Stay



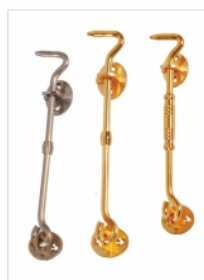
Aldrop



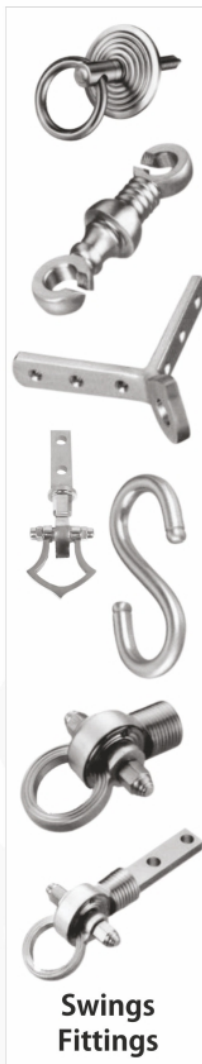
Tower Bolt



Pivot



Mirror Fittings



Swings Fittings

Quality Policy

Customer Satisfaction is our first and foremost priority, We ensure that the raw materials are procured from certified vendors having a good reputation in the market. To nurture quality at all the levels, we adopt several quality control procedures of international standards. All our products bear the hallmark of superlative quality. Our team of quality controllers supervises the entire production process and makes sure that there are no shortcomings in the process. The products are checked on the parameters of durability, reliability, dimensional accuracy, hardness, ability to withstand high pressure, etc. We follow stringent quality control checks from procurement to delivery. Every process is strictly monitored and every product is subject to the most stringent tests before reaching to the customers.

- ★ We are committed to deliver defect-free, competitive products on time.
- ★ To our customers, that will fully meet their requirements.
- ★ As well as provide them complete satisfaction.
- ★ We shall also strive for continuous improvement in our business.
- ★ We shall periodically review our quality policy & Objectives for their continuous stability.

Capabilities

Processing Expertise in:

- ★ Precision Brass Turned components as per Customer's requirement

Additional Scope of Work:

- ★ Complete assembly with Plastics and Rubber Parts

Annual Processing Capacity:

- ★ 1000 Tones Per Annum

Processing Range:

- ★ Diameter from M2 to M50 and Length From 1MM To 750MM in Brass.

CAD Software:

- ★ AutoCAD 3D, 3D Max Studio, Pro/Engineer

Packing:

- ★ As per Export Standard Packing
- ★ As per Your Requirement: We can supply customize BRAND Box & Cartoon printed as per customer's requirement.

COMPONENTS INDEX

Air conditioning Parts	01
Automotive parts	02
Bush & Unions (Male/Female)	03
CNC Machine Parts	04
Decorative Parts	05
Earthing Components	06
Electrical Parts	07
Fuse Connectors & Switch Gear Parts	07
Neutral Links / Terminal Blocks & Bras	08
Brass Electrical Plugins	09
Fasteners	10
Anchor Fasteners (Also Known As Cheville Laiton / Messing Dubel / Metal Plug)	10
Brass Bolts	11
Hex-Nuts	11
Brass Screws	12
Metric Nuts	13
Pillars / Standoffs	13
Brass Washers	14
Gas Parts	14
Inserts	15
Brass Inserts For CPVC & PPR Pipe Fittings	16
Pneumatic & Hydraulic Fittings	17
Adapters and Reducers	17
Compression Fitting	17
Compression Adaptors	17
Compression Connectors	17
Compression Elbows	17
Compression Nuts	17
Compression Parts	18
Compression Sleeves	18
Compression Tees	18
Compression Unions	18
Cylinder Adaptor	18
Female Coupling	18
Flare Fittings	19
Flare Caps	19
45 Degree Flare Elbow	19
Flare Unions	19
Flare Long Nut	19
Flare Nut - Long Neck	19
Flare Male Cross	20
Flare Male Half Elbow	20
Flare Male Half Tee	20
Flare Nuts	20

COMPONENTS INDEX

Flare Plugs	20
Flare Reducing Elbow	21
Flare Reducing Union	21
Flare Short Nuts	21
Flare Swivel Nuts	21
Flare Tees	21
Flare to Solder Union	22
Flare Condenser Union	22
Flare Inverted Tee	22
Forged Fittings	22
Forged Female Cross	22
Forged Female Street Run Tee	23
Forged Female Tee	23
Forged Nuts	23
Forged Street Elbow	23
Forged Female Elbow	23
Other Fittings	24
90 Degree Elbow	24
Four Way Male Connectors	24
Hex Plug	24
Hose Barb Fittings	24
Inserts For Soft Tubing	16
Male Female Elbow	25
Nut & Nipple	25
Olive Elbow Assembly	25
Olive Nuts	25
Olive Tee Male	25
BSP Brass Flanged Plug	25
Precision & Turned Parts	26
Sanitary Parts	27
Sheet Cutting Parts	27
Split Bolt Connectors	28
Dentistry Dowel Pins	28
Hardware (Hinges, Tower Bolts, Glass & Mirror Fittings etc.)	29
Quality Policy & Capabilities	30